



KTH ROYAL INSTITUTE  
OF TECHNOLOGY

# KTH Royal Institute of Technology

Eva Malmström Jonsson

Deputy president (prorektor@kth.se)



#TiS2016 #cetis



# Sweden's leading university of technology





# KTH in brief

- One-faculty, public, science and engineering uni.
- Established 1827 in Stockholm, Sweden
- Five campuses in the Stockholm region
  - Kista
  - Flemingsberg
  - Södertälje
  - Albanova
  - KTH Campus



Figures for 2014



# People at KTH

- > 12,000 full-time students
- > 1,900 PhD students
- Research involves more than 3,000 colleagues
  - More than 600 people belong to the Faculty
  - Approximately 300 Professors, of which 46 are women



Figures for 2013



# An international university

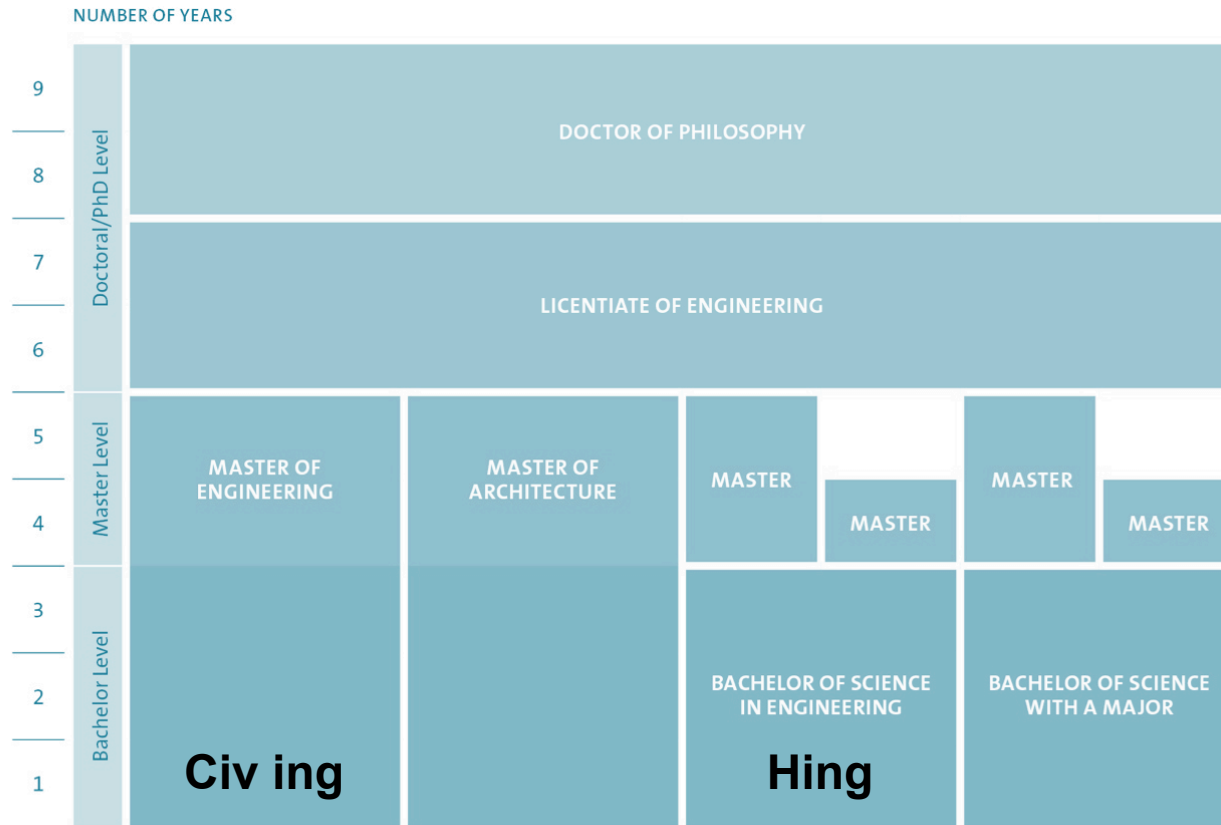
- Students and staff from > 100 nations
- International research cooperations
  - > 60% of all publications published with intl collaborators
- Worldwide student exchange, DD, JD
- Mobility
- International alliances





# Degrees adapted to the Bologna Process

English



Doctoral Prgm

PREVIOUS EDUCATION OF 12 YEARS OR EQUIVALENT IN RELEVANT SUBJECTS.

# In a dynamic environment in Stockholm





# Our own astronaut



Courses ▾

How It Works ▾

Schools & Partners

About ▾



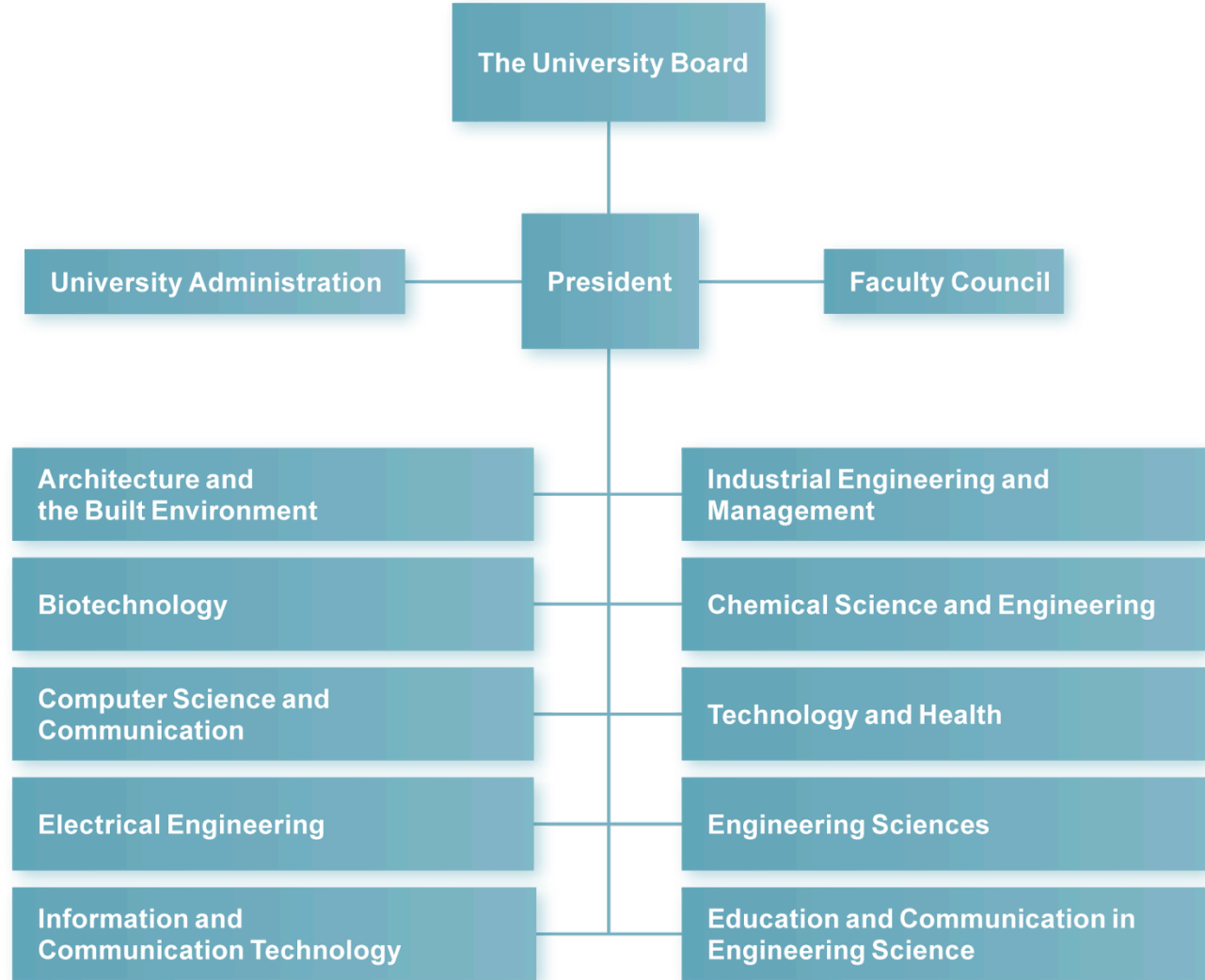
## Christer Fuglesang

Christer Fuglesang is an ESA astronaut, currently on secondment to Sweden via the National Space Board (SNSB). Fuglesang's main activities are currently at KTH Royal Technology in Stockholm, where he is Adjunct Professor in Space Physics and Direct Space Center. His research is related to particles in space: radiation on the International Space Station (ISS) since many years, and he recently joined a project involving the study of energy cosmic rays, JEM-EUSO, on ISS. Fuglesang is also responsible for the AeroSpace Program at KTH and has initiated a student CubeSat satellite project, MIST. For SNSB he is engaged in outreach activities, in particular for schools and students.





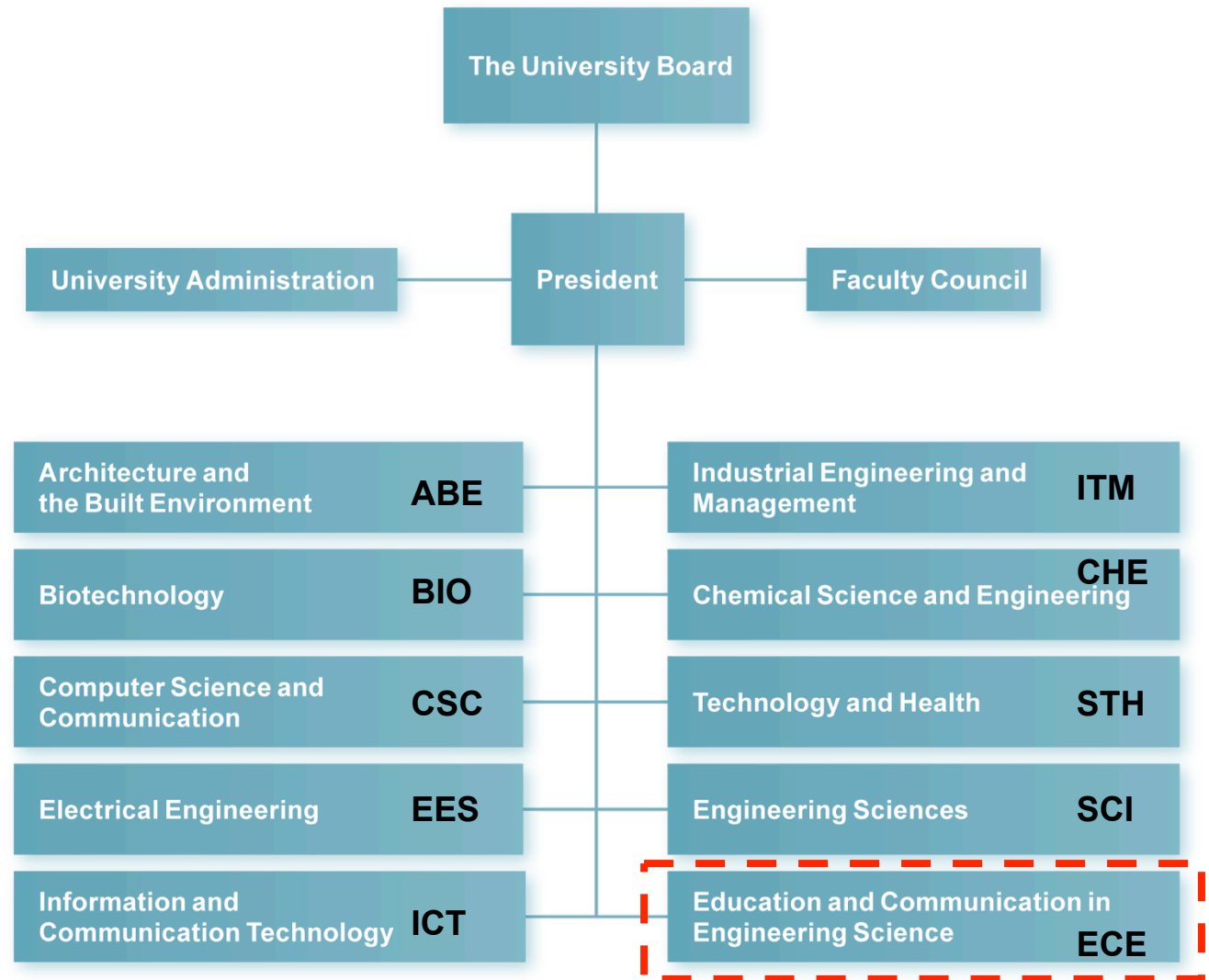
# KTH's organisation



2014



# KTH's organisation



2014



# Educational developments

- Attractiveness
  - House of Science, student ambassadors
  - Tekla and GIANTS
  - Technology as a subject in school
- Student performance and retention
- Founded School of Education and Communication of Engineering Sciences
- Pedagogical developers
- New LMS being implemented
- edX-courses to spur teachers' pedagogical interest
- Tuition fees from July 2011



# Läroarutbildning vid KTH

- Civilingenjör och Lärare
  - ma/ke ma/fy ma/teknik
- Tekniklärare år 7-9
- KPU
  
- KPU för forskarutbildade

